



Department of Commerce

Washington Fuel Shortage Action Plan

*Elizabeth "Eli" King, CEM
Energy Emergency Planner*

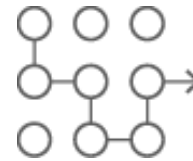
April 2019

We strengthen communities

In an effort to build a comprehensive and sustainable Emergency Management Program, the State Energy Office will align planning, training, and operations documents and activities to the following established standards and authorities.



Energy



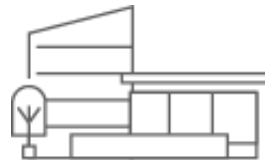
Planning



Infrastructure



Mitigation



Whole Community



Coordination

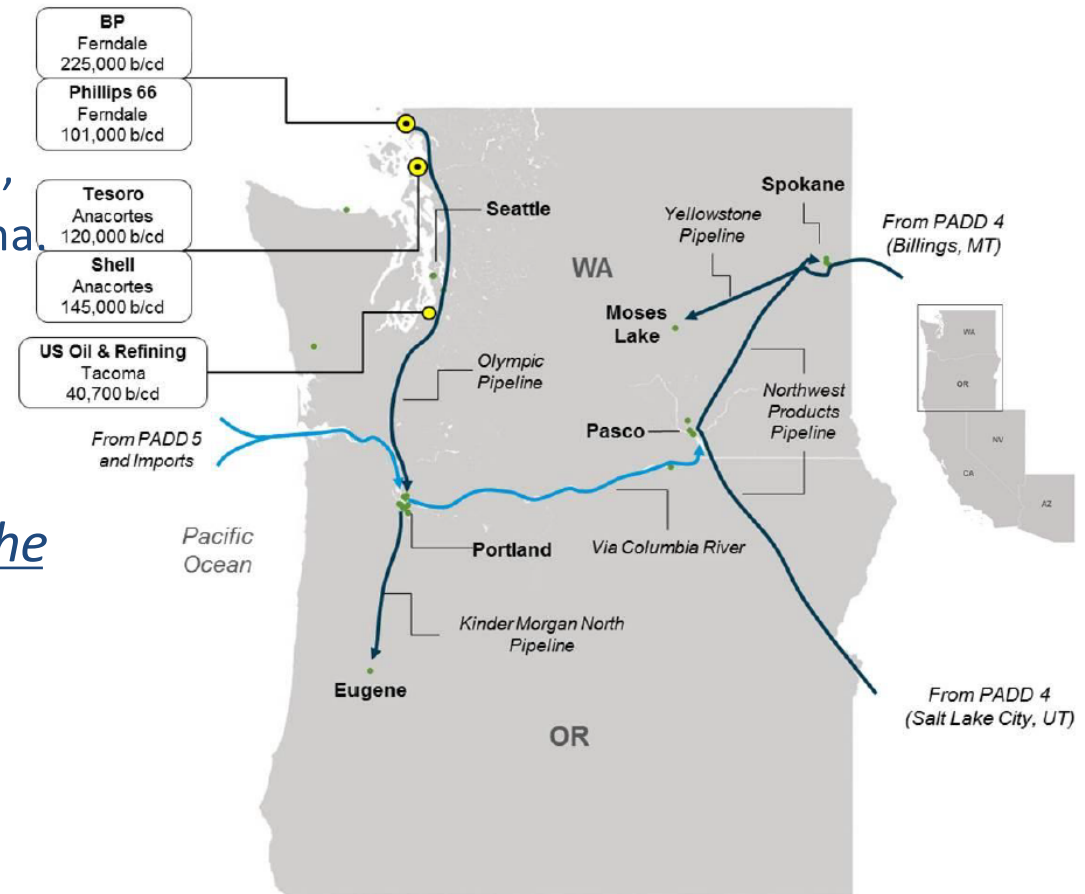


Cyber Security



State Regional Shortage - Approach

- Complexity of the oil and gas system within Washington State
 - Western & Eastern different supply chain
- Interdependence/ Dependence
 - Oregon, Alaska, California, British Columbia, Alberta, PADD 4 refineries, and pipelines from Utah and Montana.
- Process for collecting data from key stakeholders
- Public Sector and Private Sector relationship building and buy-in for the planning process.



Source: U.S. Energy Information Administration



Fuel Action Planning Process

Education & Socialization

- Oil and gas systems in Washington State
- Interdependencies with other key critical infrastructure
- Roles, responsibilities, limitations for state agencies, local county jurisdictions, tribal nations, oil & gas private sector partners.
- Coordinating with all of the WA HS Region and their members & each state agency
- Creation of a state wide planning workgroup



Fuel Action Planning Process

Data Collection & Resources

- Identification of sources, process to receive and share information.
 - U.S Energy Information Administration (EIA)
 - Energy Waiver Library
 - State Risk Profile
 - National Laboratories analysis
 - Tools
 - WebEOC, EAGLE – I, ISERnet, WSEDTS (Washington State Energy Disruption Tracking System), and social media
- Data needed from public sector partners (baseline)
 - County and Tribal Fuel Distribution Centers (general public & government)
 - Essential Services fuel consumption rate (state agencies, counties, and tribes)



Fuel Action Planning Process

Incorporating Corrective Actions

- Reviewed After-Action Reports (AAR)
 - 2017 Hurricane Season, Super storm Sandy, NASEO workshop summaries, National Petroleum Council Report (2014)
- WA Enbridge NG Pipeline Disruption AAR
- Takeaways from the reports:
 - **Challenges**
 - Communication between all levels of government
 - Overall situational awareness
 - Contract guidance
 - Access to data in real time
 - **Recommendations**
 - Prioritization guidelines
 - Streamline/ enhance process for waivers
 - Fuel needs assessment/ fuel needs for critical missions
 - Relationship building (public/private/neighboring states)



Fuel Planning Areas of Focus

- Development of an Operational Plan

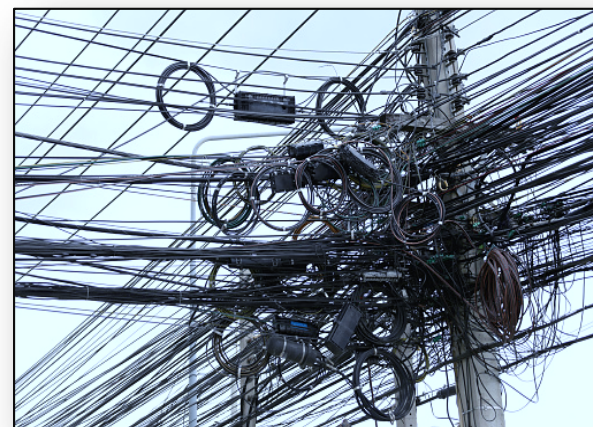
Washington State Fuel Action Plan: Nine Priority Actions

Action 1	Action 2	Action 3	Action 4	Action 5	Action 6	Action 7	Action 8	Action 9
Notification Activation and Authorities	Public Information	Damage Assessment	Assess Fuel Needs & Determine Priorities	Fuel Conservation Measures	Temporary Waivers	Fuel Allocation	Outside Assistance Fuel Supply	Recovery
Initial Notifications Activation of ESF 12 Succession & Authorities	Public Facing information (website, etc.) Public Information Campaign – social media News conferences Telephone Information Center	Assess impacts to petroleum infrastructure Estimate timeline for repairs Provide fuel sector info & status updates Critical Transportation Infrastructure (Roads, Bridges, Airports, etc.)	Assess fuel availability in Washington Assess state ESFs, counties, tribal, and critical infrastructure fuel needs Determine state & regional fuel priorities Governor's Cabinet	Issue voluntary fuel conservation measures Issue mandatory fuel conservation measures	Obtain temporary environmental, operational, and safety waivers as needed to ensure the timely delivery of fuel	Review & approve/deny fuel requests (ESF Primary State Agencies, Counties, & Tribes) Allocate fuel to approved state agencies, Counties, Tribes, critical infrastructure, essential services Odd/Even Fuel Allocation	(Fuel Task Force) Identify & obtain fuel source Identify viable fuel delivery options into Washington Identify viable options for dispensing fuel	Allocate fuel to support recovery activities State Recovery Coordinating Activities – RFS Governor's Cabinet Terminate fuel recovery activities as appropriate



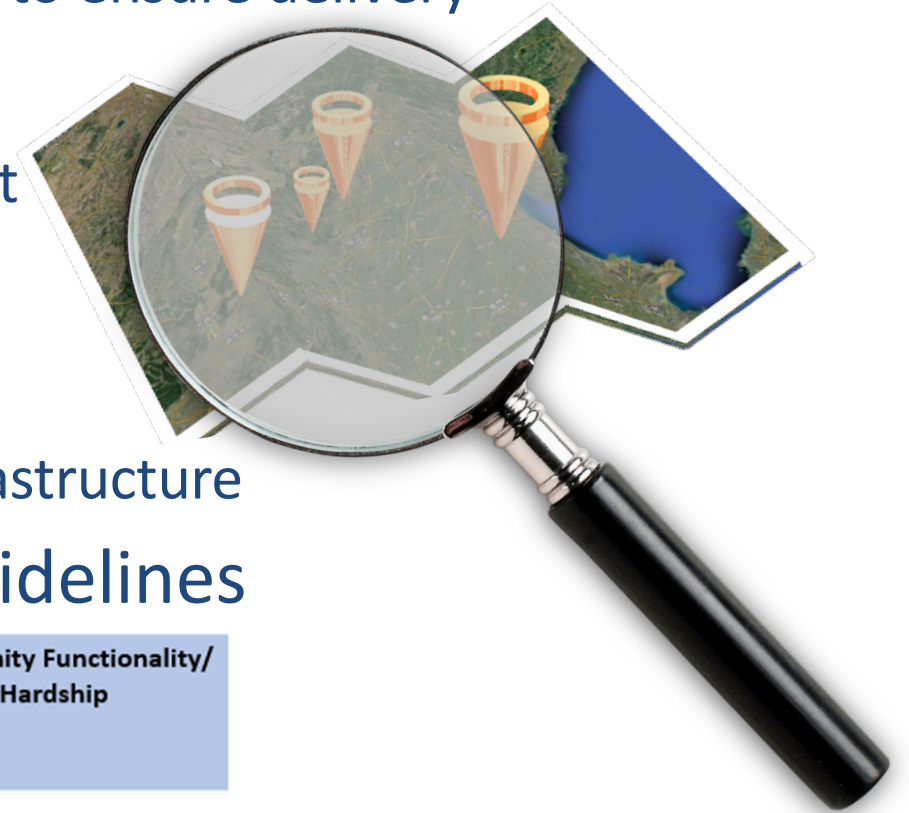
Fuel Planning Areas of Focus

- Communication between local, state, tribal, federal, & industry
 - Systems and Pathways
- Situational Awareness/ Information sharing
 - Data gathering, displaying of information
- Coordination with the Supply Chain Technical Assistance
 - Identification of system interconnections
 - Engagement with the private sector (e.g. retail gas stations, fuel distributors)



Fuel Planning Areas of Focus

- Policy/ Contract Guidance
 - Prioritization and specific terms to ensure delivery
- Fuel Waiver Process
 - Education, process development
- Fuel needs assessment
 - State agencies, counties, tribes
 - Essential services & Critical Infrastructure
- Developing prioritization guidelines



Priorities	Emergency Response & Essential Services	Critical Infrastructure & Critical Facilities	Community Functionality/ Hardship
------------	---	---	-----------------------------------



Fuel Planning Priority Guidelines

Priorities	Emergency Response & Essential Services	Critical Infrastructure & Critical Facilities	Community Functionality/ Hardship
Definition	<ul style="list-style-type: none"> Emergency response is any systematic response to an unexpected or dangerous occurrence. The purpose of the response must include actions to mitigate the impact of an incident on human life, property, and the environment. Essential Services includes those services if interrupted would endanger the life, health or personal safety of the whole or part of the population. 	<ul style="list-style-type: none"> Systems and/or facilities, whether physical or virtual, so vital to the U.S. that the incapacity or destruction of such systems and/or facilities would have a debilitating impact on security, national economic security, national public health or safety, or any combination of those matters. The following make up the critical infrastructure: <i>Water, Agriculture & Food, Public Health, Emergency Services, Telecommunications, Energy, Transportation, Banking & Finance, Postal & Shipping, Chemical & Hazardous Materials</i> 	<ul style="list-style-type: none"> This is intended for general public use including retail gas fueling stations for communities experiencing a hardship not related to life safety and/or life sustaining services. The hardship must be more than mere inconvenience and the inability to pay for fuel must not be the only factor. Undue hardship is determined on a case-by-case basis, via an application for a decisions making process, and an appeals/oversight process.
Core Capability	<ul style="list-style-type: none"> Operational Coordination Public Information & Warning Critical Transportation Fire Management & Suppression On-scene Security, Protection, & Law Enforcement Operational Communications Public Health, Healthcare, and Emergency Medical Services* 	<ul style="list-style-type: none"> Infrastructure Systems Environmental Response/ Health and Safety Logistics and Supply Chain Management Public Health, Healthcare, and Emergency Medical Services* 	<ul style="list-style-type: none"> Community Resilience Health and Social Services



Planning Process Feedback

Success!

- State wide participating in planning efforts
- Supply Chain Technical Assistance Program
- WA SCIPT Catastrophic Planning
 - Transportation (RRAP)
 - Water
- Local jurisdictions fuel contracts
 - Clark County
 - City of Seattle

Areas of Improvement!

- Everyone wants to go Catastrophic
- State fuel contract with many users
- Engagement with the oil and gas private sector



Forward Momentum

Regional Catastrophic Framework

- Regional Resiliency Assessment Program (RRAP) refined product for Idaho
- Support from PNWER to assist in coordination with British Columbia & Alberta Canada
- Coordination with Oregon, Idaho, Alaska, Utah*, & Montana* (PADD 4*)
- Private Sector Coordination with Refineries, Fuel Terminals, Fuel Distributors, Pipelines, and local gasoline retailers





Department of Commerce



www.commerce





Department of Commerce

Elizabeth “Eli” King, CEM, MEP

Energy Emergency Planner

(360) 764-0126

elizabeth.king@commerce.wa.gov

The past is your lesson. The present is your gift. The future is your motivation.

-Unknown.

[www.commerce](http://www.commerce.wa.gov)

[facebook](#) [twitter](#)